



### WORLD-CLASS CABIN & COMFORTABLE SEATING

- Wider comfortable seats for 3 (driver + 2 passengers)
- 4-way weight suspended adjustable driver seat
- Integrated head-rests and arm-rest in center
- Dash-mounted gear lever – makes it walk through
- Utility pockets on the head box – provides more storage space
- Foldable arm-rest with storage box and bottle holder, magazine pocket in door trim



### SUSPENSION

- Front – parabolic leaf for smooth rides and comfort at variable loads
- Rear – semi-elliptical leaf spring
- Tuned shock absorbers – adjustable to GVW
- Front suspension comes with rubber bush



### RADIAL TUBELESS TYRES

- Increased braking efficiency
- Better torque on wheel
- Longer life compared to Tube Tyres
- Less rolling resistance – Better fuel economy



### LAMPS

- Head lamp – new generation stylised clear lens lamps
- Tail lamp – integrated with LED lamps

MODEL	ULTRA T.9
<b>VEHICLE DIMENSIONS</b>	
Wheelbase (mm)	3920
Cabin Width (mm)	2204
Overall Dimensions (OL x OW x OH) (mm)	7058 x 2204 x 2469
Track Front (mm)	1836
Track Rear (mm)	1684
Minimum Turning Circle Dia. (mm)	12.9
Front Over Hang (mm)	1180
Rear Over Hang (mm)	1863
Ground Clearance (mm)	185.5
<b>WEIGHTS</b>	
Gross Vehicle Mass (Kg)	8990
Tare Weight (Kg)	3370
Max. Permissible Front Axle Weight (Kg)	3327
Max. Permissible Rear Axle Weight (Kg)	5663
<b>ENGINE</b>	
Model	3.3LNGD09
Type	Common Rail - Intercooler
Piston Displacement	3300 cc
Max. Power Output	155 Ps @ 2600 rpm
Max. Torque	450 Nm @ 1500 - 2200 rpm
Bore x Stroke	100 x 105
Compression Ratio	17.5:1
Fuel Injection System	Common Rail
Twin Modes	Power & Eco
<b>TRANSMISSION</b>	
Model	TATA GBS 550 with Cable Shift Mechanism
Type	Manual, 6 Forward and 1 Reverse. Overdrive.
Gear Ratio	1st - 6.9, 2nd - 4.02, 3rd - 2.39, 4th - 1.46, 5th - 1, 6th - 0.84
PTO	PTO Provision
<b>CLUTCH</b>	
Type	Single plate dry friction type Booster Assisted with pneumatic clutch actuator
Clutch Dia	330 mm
<b>AXLE</b>	
Front Axle Type	*R* Assy with S-Cam Brakes
Rear Axle Type	TATA RA-1055 Banjo Axle
<b>BRAKES</b>	
Service Brake System	Dual circuit full Air S-cam brakes
Parking Brake	Spring actuated acting on rear wheels
Anti-lock Braking System	Yes
<b>AGGREGATES</b>	
Steering System	Power (Tilt & Telescopic)
Front Suspension	Parabolic leaf spring, Hydraulic Double acting Shock Absorbers
Rear Suspension	Semi elliptical leaf spring, Hydraulic Double acting Shock Absorbers
Tyre Size	215/75R 17.5
No. of Tyres	2+4+1
Maximum Speed	105 kmph
Gradeability	36.6%
<b>OTHER FEATURES</b>	
Air Conditioner	HVAC
System Voltage	24 Volt
Fuel Tank	120 Litre
Seating Capacity	Driver + 2
Telematics	Enabled

**TATA MOTORS**  
Connecting Aspirations



**POWERED BY EFFICIENCY.**

**PRESENTING ALL-NEW TATA ULTRA T.9**



\*Image is for representational purpose only. Actual vehicle, load body & accessories may vary.

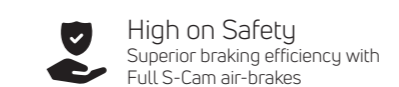
*Telematics Enabled*



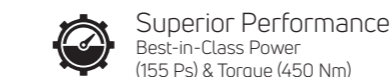
For more information, please contact: **Corporate Office:** 80 Moo.5 Lam Luk Ka Road, Bueng Kham Phroi, Lam Luk Ka, Pathum Thani 12150 Showroom LamLukka TATA Motors  
**Website:** www.tatamotors.com, www.tatamotors.co.th | **Customer Helpline:** cac@tatamotors.com



High Fuel Efficiency



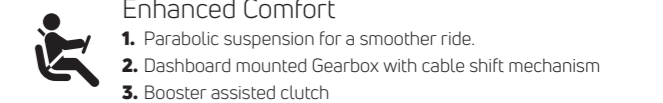
High on Safety  
Superior braking efficiency with Full S-Cam air-brakes



Superior Performance  
Best-in-Class Power (155 Ps) & Torque (450 Nm)



Two Power Modes  
Power & Eco Switch



Enhanced Comfort  
1. Parabolic suspension for a smoother ride.  
2. Dashboard mounted Gearbox with cable shift mechanism  
3. Booster assisted clutch

## NEW GENERATION ENGINE



### 3.3L New Gen CR Engine

Type	Common Rail Diesel Engine
Number of Cylinders	4 Cylinders; In-line
Bore/Stroke (mm)	100 mm x 105 mm
Capacity (cc)	3300 cc
Max. Engine Output	155 Ps @ 2600 rpm
Max. Torque (Nm)	450 Nm @ 1400-2200 rpm
Emission Compliance	Euro IV

**FE Switch – Two modes available to achieve better fuel economy and optimum vehicle performance**

- Power Mode** - Optimized for heavy loads and steep grades to meet increased power demand
- Eco Mode** - Optimized for rated load or during unladen condition



The Ultra T.9 with a modern Ultra Walkthrough Cabin is designed for city and short to long-haul transportation. The vehicle is equipped with an advanced TATA 3.3L NG CR Euro-4 engine with enhanced power of 155 Ps & torque of 450 Nm mated to a 6-speed Gearbox with an Overdrive feature for optimized performance and high fuel efficiency even at higher speeds.

looks, a crash-tested steel cabin, a 4-way adjustable driver seat with integrated headrest, Tilt & Telescopic Power Steering, Dashboard mounted gear lever resulting in higher comfort while driving.

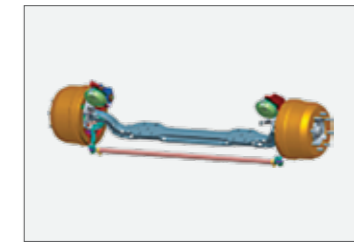
The high performance of the vehicle, best-in-class fuel mileage & economy of operations together lead to serving multiple applications and redefining the transportation industry.

The Ultra T.9 is offered at 8990 kg GVW and comes with elegant



## Clutch

- 330 mm of clutch lining diameter
- Pneumatic clutch booster for reduced pedal effort
- Organic material for smooth torque transfer



## Heavy Duty Front Axle

- Durable Front Axle with Higher Life and Best-in-class TCD

## Single Key Operation

- For the comfort and ease of driver



## Telematics

- Vehicle Management System for Fleet Owners



## FEATURE HIGHLIGHTS

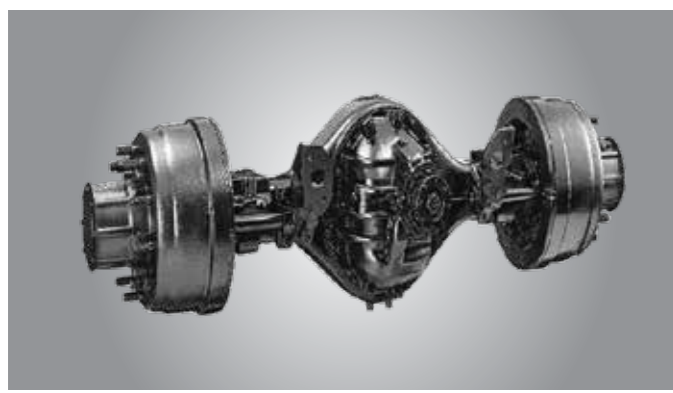


- Front mirror for foreground visibility & wide angle ORVMs
- Panoramic view windshield
- Sheet metal 3-piece design bumper
- Footstep for windscreen cleaning

- World-class cabin comfort
- High modularity, strength and durability
- Best flat torque curve in its segment
- Best-in-class fuel economy in most applications and terrain
- Low maintenance and ease of service
- Telematics option for fleet operators

## MULTIPLE APPLICATIONS

- Parcel & Courier
- Industrial Components
- FMCG
- Auto Components
- Agri Products
- Industrial Pipes
- White Goods
- Beverages

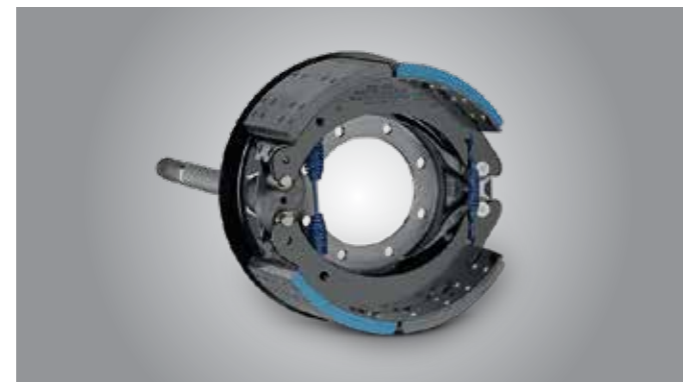


## REAR AXLE

- Banjo type rear axle(RA 1055)
- Reliable & Rugged
- Ease of maintenance & repair-ability

## FULL AIR S-CAM BRAKES

- Improved and safer stopping ability
- Higher braking efficiency
- Fitted with Anti-lock braking system



## NEW GENERATION MULTI-DISPLAY ELECTRONIC CLUSTER

- Gear shift indicator
- Displays trip and live kmpl indicators–fuel, water in fuel, low air pressure, r/min, speed, brake, seat belt, temperature, economy, time, neutral position, etc.
- Power & Eco Switch



## TILT & TELESCOPIC POWER STEERING

- Power steering with drooping characteristic – stability at high speed
- Tilt & telescopic – Suited for all drivers
- Palm effort drivable steering



## CHASSIS

- Strong chassis with bolted design for increased modularity
- High torsional bending and lateral stiffness
- Best in class ride & handling with front anti-roll bar

## GBS-550 6F+1R GEARBOX WITH CABLE SHIFT

- Integral clutch housing with gear box
- Synchromesh on all gears
- Reduced Gear Shifting efforts

